

WEEK 8 NEWSLETTER

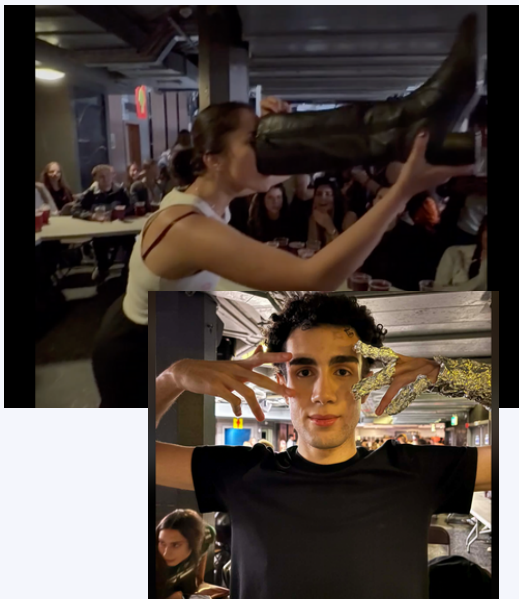
DOM TOUR

PPE took over Liverpool this weekend for a fascinating domestic tour. From the iconic docks and the bustling Christmas market to art galleries, city wanderings, cute cozy cafés and two massive nights out, the trip was a perfect mix of culture, chaos and core memories. Whether we were wandering waterfront paths or dancing until questionable hours, Liverpool delivered on every front – and as one random Liverpool uni legend so confidently put it: “If Liverpool Uni is down here, Warwick Uni is up there!!” 📈📈



Alex Bryan

Professor Alex Bryan from Cambridge delivered a fascinating talk on workers rights (a core topic which can come up in all disciplines), focusing on dynamic workplace risks. His talk gestured towards rethinking workplace risks as shared social burdens to be redistributed on judicial grounds rather than through private contract agreements. He argued that this will be increasingly relevant due to climate volatility and the possibility of future pandemics.

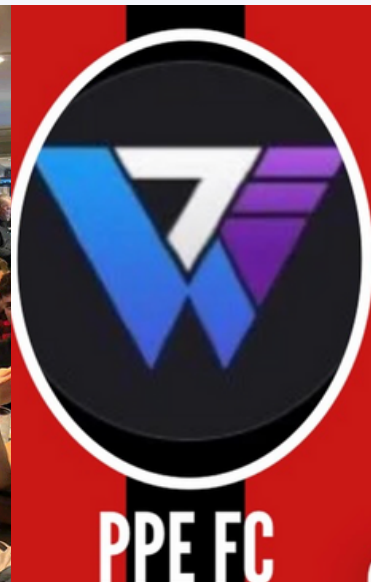


CIRCLE

The Copper Rooms didn't know what hit it when we went Circling with the devils on Wednesday evening!! The theme was pop (not the club!!) icons, and there were a range of costumes, from multiple Britney spears to Freddie Mercury. This circle probably saw the most amount of shoeys per capita and I'm happy to report that it was a tremendous success (even after we were under allocated) 😎😎

FOOTBALL RESULTS

Last Wednesday PPE FC played against the statistics society for a 2-2 draw and continued their unbeaten streak. At halftime the boys were leading 2-0 but true to their name, the statistics society found the formula and equalized twice in the second half. By remaining unbeaten, PPE remains the most feared side in the intramural circle. 🍆🍆



Family Scheme Table



Mpundooks 🦆

35



Tabby & Ari

35



Diya & Ella

35



Brown, Browner, Brownest 🐉

25



Roshan & Aditya

20

4th

Alex, Vincent & Bassel

10

5th

All Other Families

5

WEEKLY CHALLENGES

for points!

- Most family donations in charity circle - 15 points
 - Take a group selfie with a lecturer- 10 points
 - Family attendance at Charity Circle- 10 points

EVENTS TO WATCH OUT FOR IN WEEK 8

This Tuesday we will be having a charity circle with econ soc where you've got to wear your worst outfit!! Assembly has been booked out, and if we raise enough money there will be different forfeits for each milestones!!

On wednesday we will be doing a joint roundtable with congress, people will be split into small groups where they will be given a topic to discuss and must come to a conclusion about

Join us for "Search of the Lost Decades: Understanding Latin America's Development Challenges", where speakers will discuss some of the biggest challenges

Come to our careers event along with EPP and PPL on Saturday, as we bring in alumni who will discuss their current job, and will do a Q&A. This is a great opportunity to network, and will be interesting for any career path.

TUE
25

Charity circle w/ Econ

Assembly
7.30pm

DONATE

WED
26

PPE x Congress Roundtable

B2.04/5
4pm-5pm



FRI
28

Speaker's Event w/ LatAm

So.11
3pm-4pm



SAT
29

PPE x PPL x EPP Careers Event

S0.20 and S0.21
11am-3pm



OUR SPONSORS



SRLV



HERBERT SMITH
FREEHILLS
KRAMER

SEO
/LONDON
SPONSORS FOR
EDUCATIONAL
OPPORTUNITY

Vinson
CENTRE



UNIVERSITY
OF WARWICK

BRIGHT
NETWORK



corporate
finance

SOCIETYWARWICKPPE@GMAIL.COM